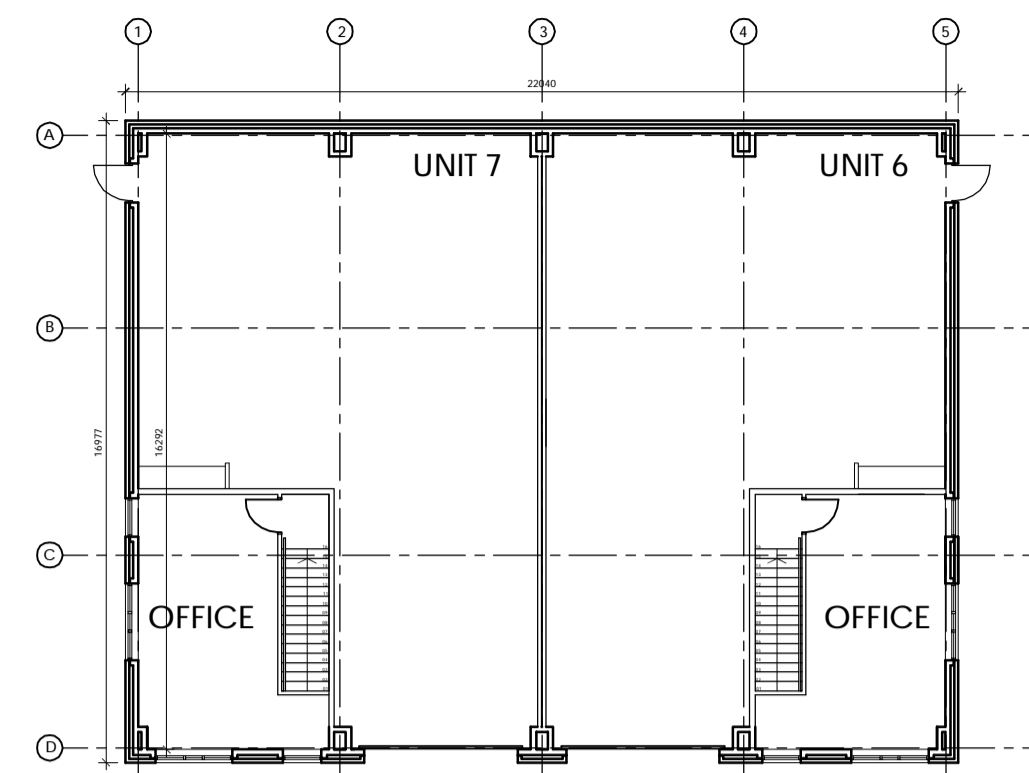
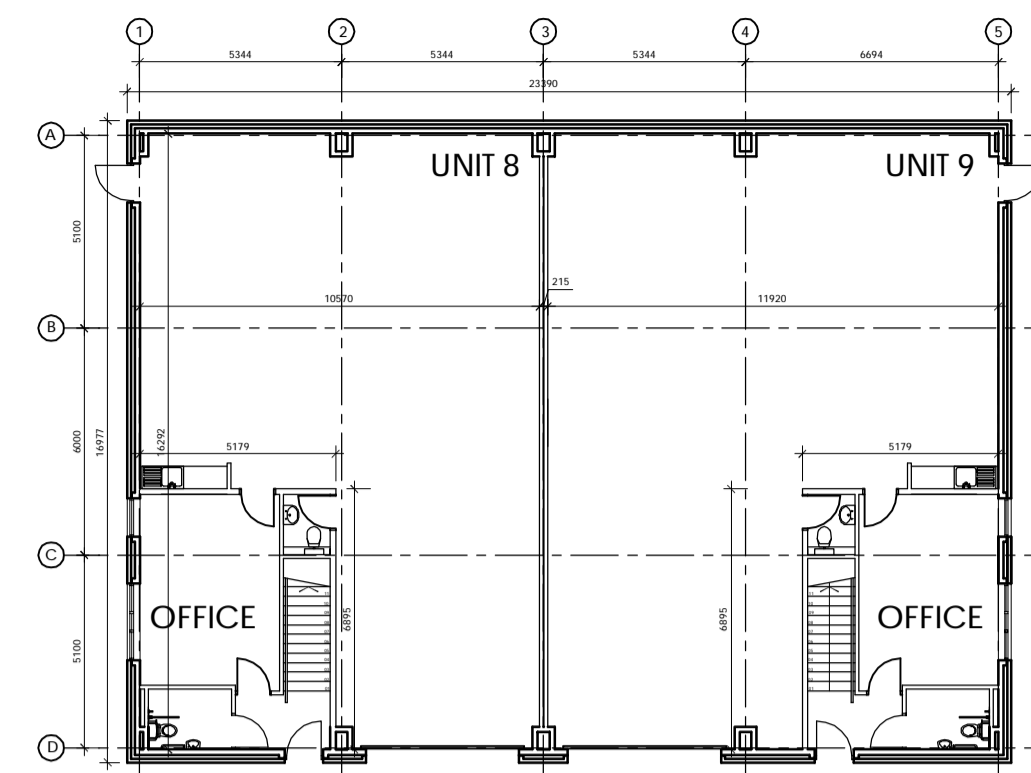


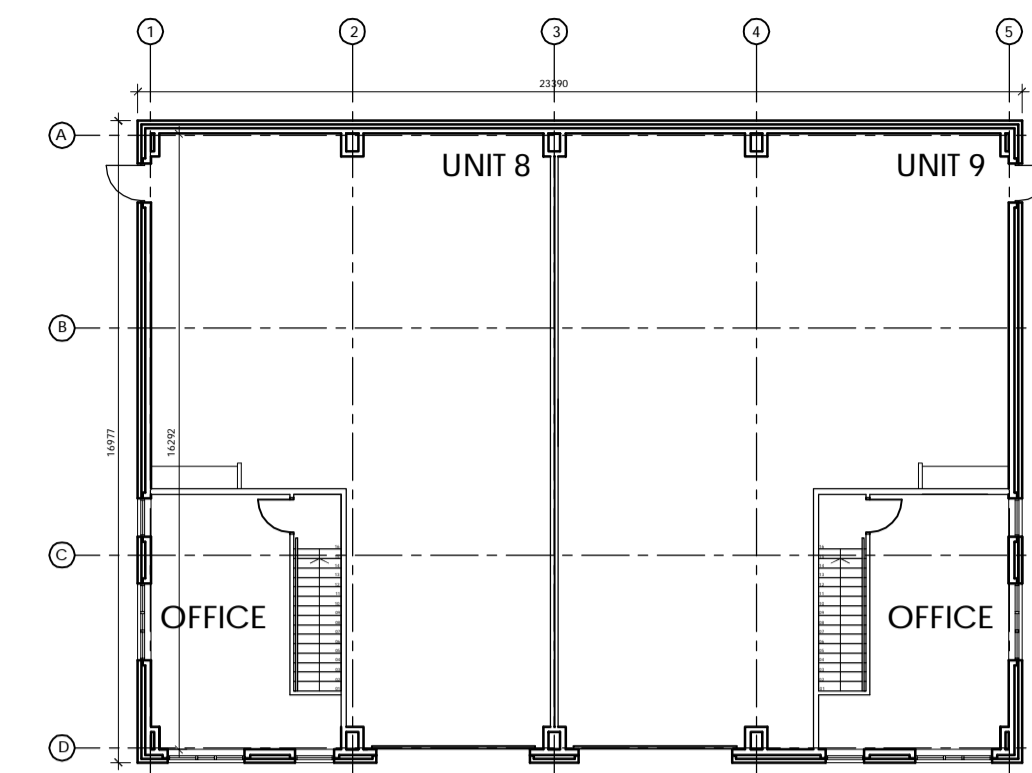
UNITS 6 - 7 GROUND FLOOR PLAN



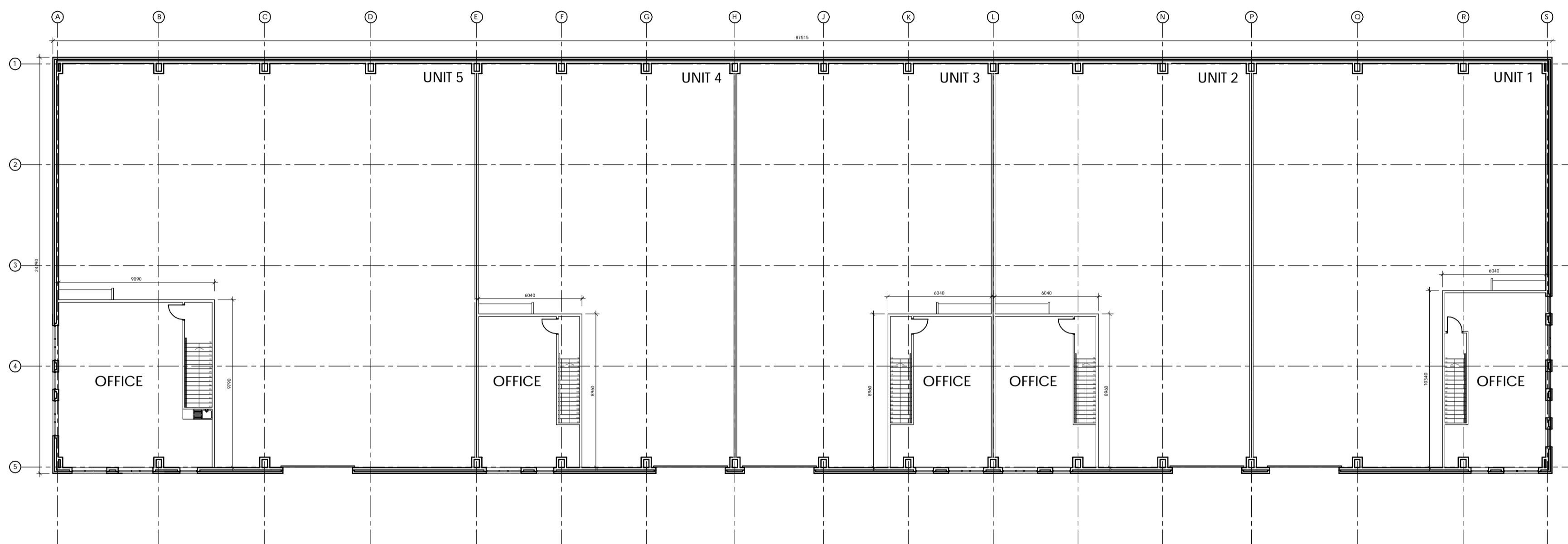
UNITS 6 - 7 FIRST FLOOR PLAN



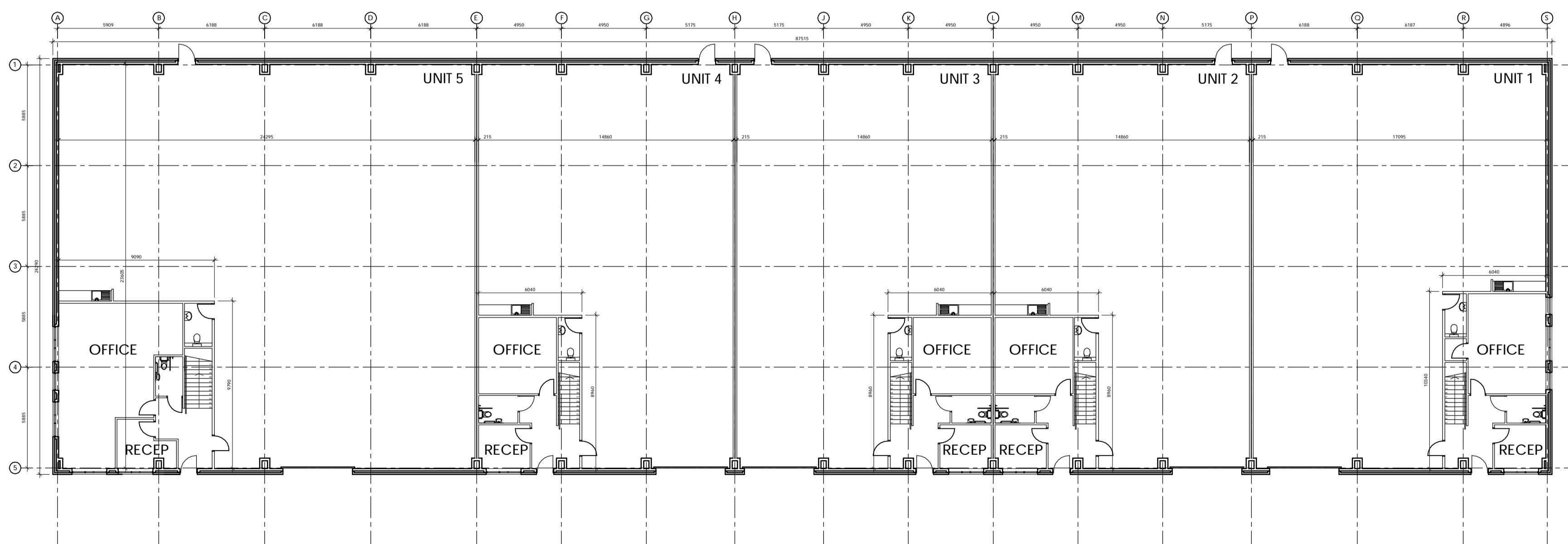
UNITS 8 - 9 GROUND FLOOR PLAN



UNITS 8 - 9 GROUND FLOOR PLAN



UNITS 1 - 5 FIRST FLOOR PLAN

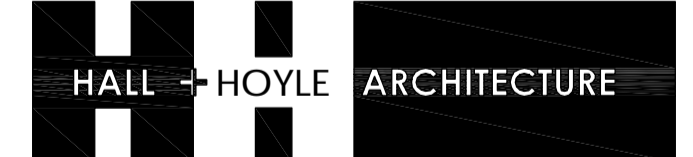


UNITS 1 - 5 GROUND FLOOR PLAN

**SCHEDULE OF GROSS INTERNAL AREAS**

UNIT 1 -	4,940 sq ft (459 sq m) (including 2 storey office of 1,290 sq ft (120 sq m))
UNIT 2 -	4,300 sq ft (399 sq m) (including 2 storey office of 1,120 sq ft (104 sq m))
UNIT 3 -	4,300 sq ft (399 sq m) (including 2 storey office of 1,120 sq ft (104 sq m))
UNIT 4 -	4,300 sq ft (399 sq m) (including 2 storey office of 1,120 sq ft (104 sq m))
UNIT 5 -	7,090 sq ft (659 sq m) (including 2 storey office of 1,850 sq ft (172 sq m))
UNIT 6 -	2,210 sq ft (205 sq m) (including 2 storey office of 730 sq ft (68 sq m))
UNIT 7 -	2,210 sq ft (205 sq m) (including 2 storey office of 730 sq ft (68 sq m))
UNIT 8 -	2,210 sq ft (205 sq m) (including 2 storey office of 730 sq ft (68 sq m))
UNIT 9 -	2,450 sq ft (228 sq m) (including 2 storey office of 730 sq ft (68 sq m))

REV A ARP 21-02-07 AMENITY PODS AMENDED IN ACCORDANCE WITH CLIENT REQUIREMENTS



3 Walmer Villas  
Bradford  
Yorkshire  
BD8 7ET

Email: design@hallhoyle.co.uk

Tel: 01274 542542  
Fax: 01274 541607

INDUSTRIAL DEVELOPMENT  
BARROWFIELD ROAD  
HICKLETON  
for  
D NOBLE LIMITED

UNITS 1 - 9  
PROPOSED FLOOR PLANS

Date:	Drawn By:	Checked By:	Scale:
JAN 07	ARP		1:200
Project No:	Drawing No:	Revision:	
2458	004	A	