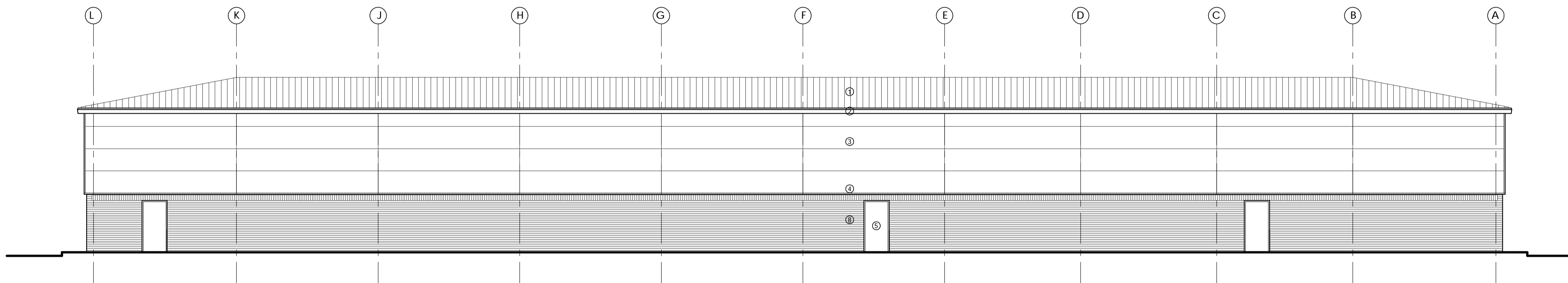
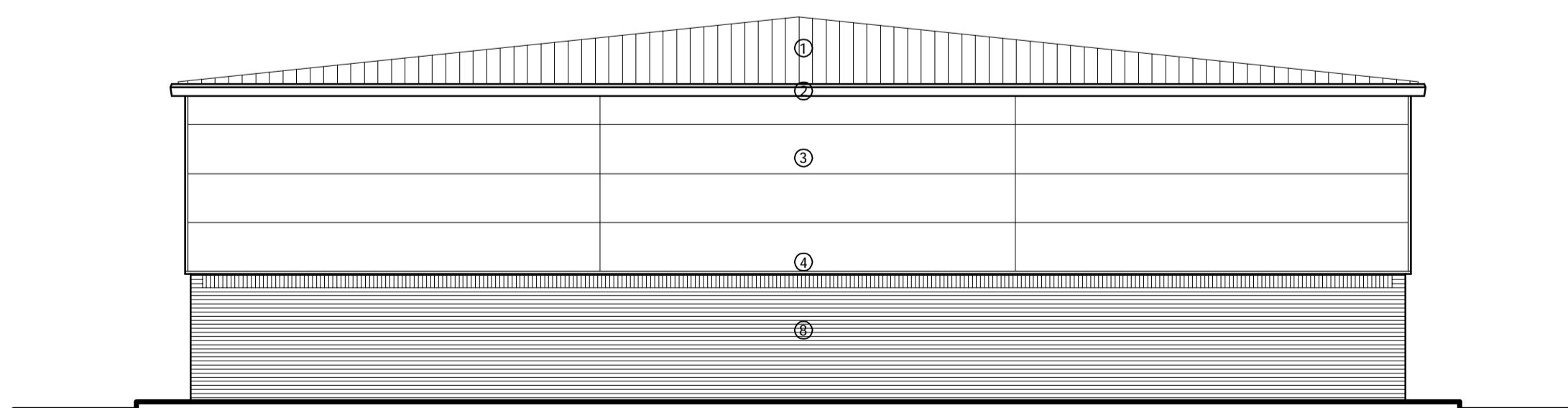


FRONT ELEVATION

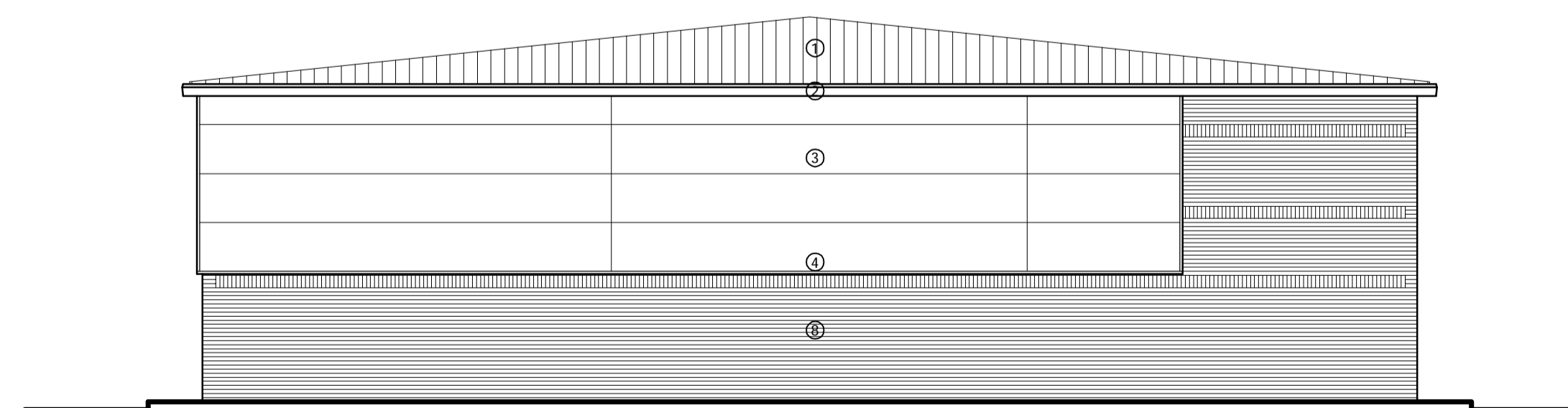
1. PROFILED ROOF CLADDING, COLOUR - COLOURCOAT HPS200 ALBATROSS (LIGHT GRAY) (BS 18 B 17)
2. EAVES FASCIA, GUTTER AND DOWNPIPES, COLOUR - COLOURCOAT PVDF SLATE GREY (RAL 7012)
3. HORIZONTAL COMPOSITE MICRO RIB WALL CLADDING, COLOUR - COLOURCOAT PVDF METALLIC SILVER
4. TRIMS AND FLASHINGS/DRIP, COLOUR - COLOURCOAT PVDF SLATE GREY (RAL 7012)
5. STEEL PERSONNEL DOOR AND FRAMES TO BE MOUNTAIN BLUE (RAL 5014)
6. SECTIONAL OVERHEAD DOORS, COLOUR - COLOURCOAT PVDF MOUNTAIN BLUE (RAL 5014)
7. POLYESTER POWDER COATED ALUMINIUM FRAMING, GLAZED ENTRANCE SCREENS AND OFFICE WINDOWS, COLOUR - FRAMING DARK GREY
8. BRICKWORK - BLUE FACING
9. CANOPY COMPRISING COLOUR COATED/PAINTED STEELWORK SUPPORTS WITH LAMINATED GLASS COVERING



REAR ELEVATION



SIDE ELEVATION



SIDE ELEVATION

REV E SA 14-01-08 ROOF COLOUR AMENDED.  
 REV D PS 20-04-07 EAVES LOWERED.  
 REV C ARP 30-03-07 SIGNAGE ZONES INDICATED.  
 REV B PS 09-08-06 VARIOUS ALTERATIONS FOLLOWING COMMENTS FROM CLIENT.  
 REV A PS 25-07-06 VARIOUS ALTERATIONS FOLLOWING COMMENTS FROM CLIENT.



**HALL + HOYLE ARCHITECTURE**  
 3 Walmer Villas  
 Bradford  
 Yorkshire  
 BD8 7ET

Email: design@hallhoyle.co.uk

Tel: 01274 542542  
 Fax: 01274 541607

INDUSTRIAL DEVELOPMENT  
 CALDER BANK ROAD  
 DEWSBURY  
 for  
 D NOBLE LIMITED

PROPOSED ELEVATIONS  
 UNITS 5-7

Date:	Drawn By:	Checked By:	Scale:
JUL' 06	DSB		1:100
Project No:	Drawing No:	Revision:	
2456	009	E	